

# abs wireless router

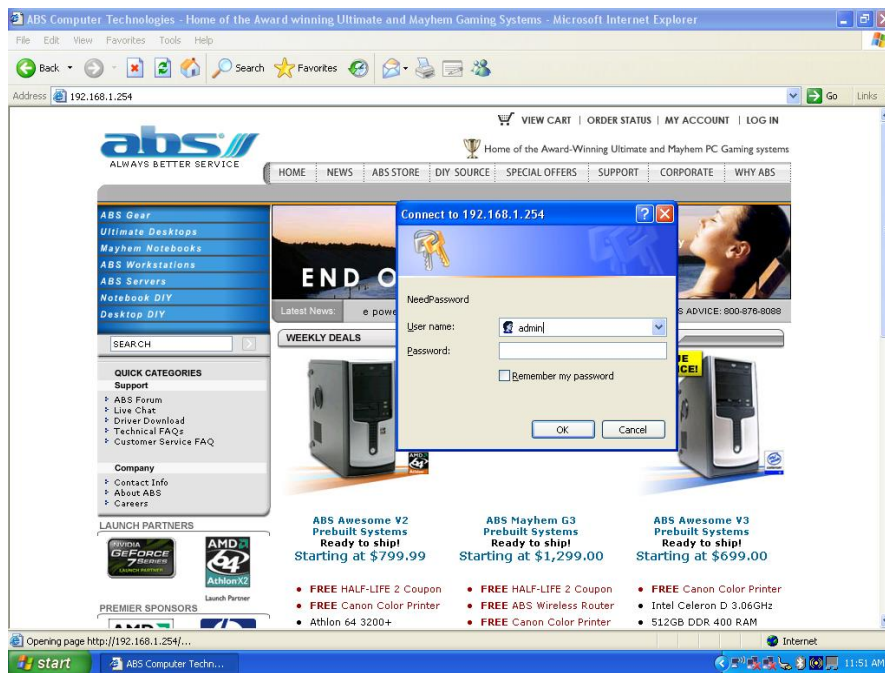
model: ABS NW-203-RT

In regards to several issues (mainly compatibility and connectivity), ABS has released a new firmware to address such issues. This guide will demonstrate the procedure to upgrade the firmware of the NW-203-RT.

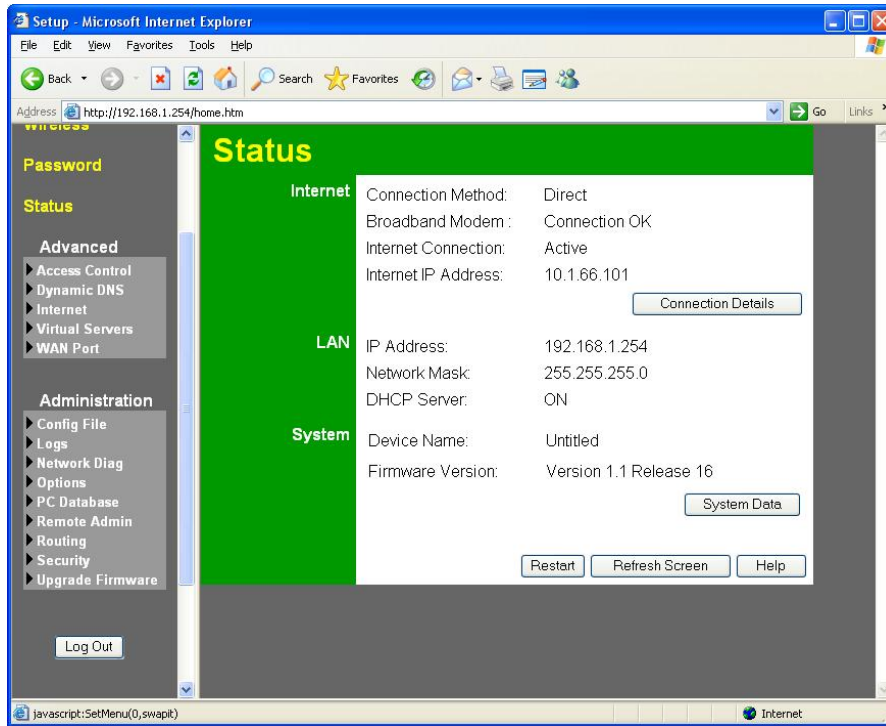
Connect to the server VIA Ethernet (RJ-45 connection) if you cannot access the Wireless Router via wireless connection.



Use any ports above within the left circled ports to connect to a system. Access the user interface via any web browser (Internet Explorer, Mozilla Firefox).

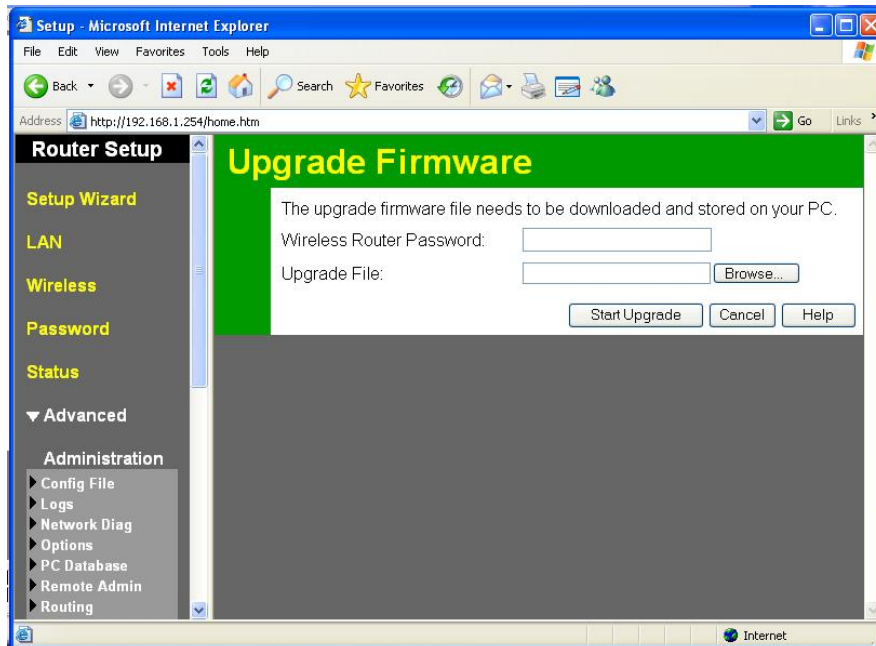


Login and expand the administration link. In here you'll find multiple options including "Upgrade Firmware". Select the "Upgrade Firmware" option.

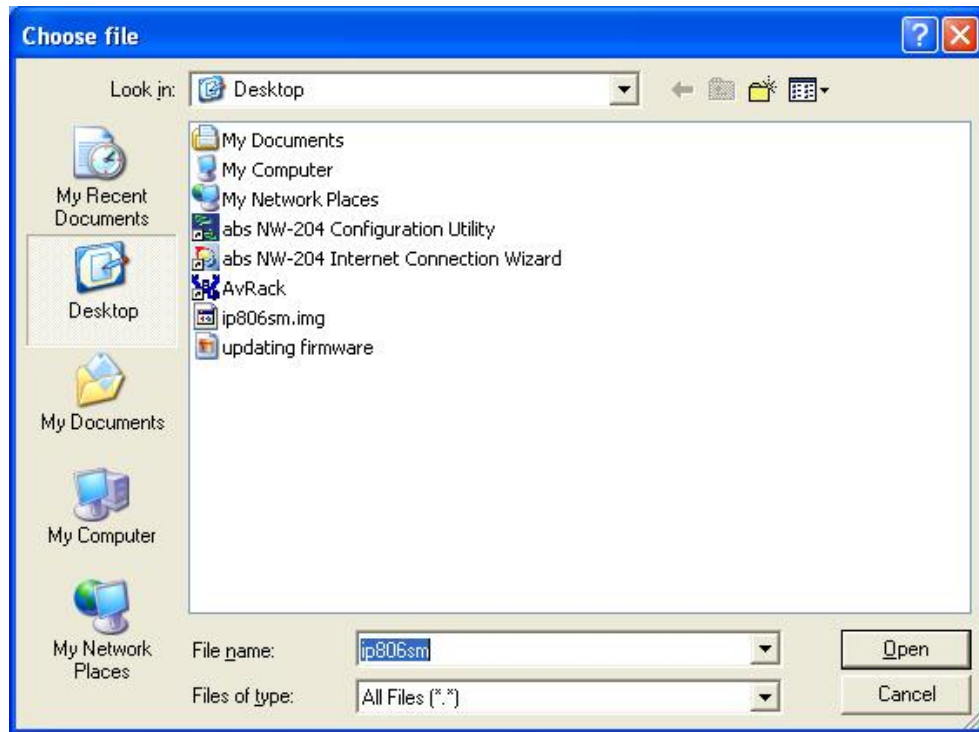


*The administration link expanded...*

Once you're in the "Upgrade Firmware" option, you'll see a text field for the "Router Password" and the "Upgrade File" field. If your wireless router has a password, enter it in. Next to the Upgrade File text field is a "Browse" button. Browse for the appropriate file.



After the file is found, click on the "Start Upgrade" button and the firmware will be flashed. When the router is finish flashing the new firmware, it will restart, and the default configurations will be loaded.



*Selecting the appropriate file...*

You may now unplug the Ethernet connection from the rear of the wireless router. Test out the network connection with the wireless, and try to connect to the router. The firmware should address the connectivity issue it was having with certain wireless access cards.